



Security Designed for Your Peace of Mind

Parts List & Instructions for Assembly & Installation of 007 SYSTEMS SM100 with Security Access Console 100 or 200

Parts List:

- (1) SM100 Swivel Mount
- (1) Tinted Plexiglas Lens
- (2) 1/4" or .25" Phillips Screws
- (2) Brass Camera Board Screws (Small)
- (2) Nylon Camera Board Washers
- (1) 4" Zip Tie

Installation Instructions:

1. Please place front of console face down on protective foam to keep from scratching surface.
2. Place the plexiglas in the open window. Make sure the paper is off on both sides and the glass is clean.
3. Screw the plexiglas down using (2) 3/16" or .1875" screws, (2) 3/8" or .375" round washers and (2) #6 tab washers as shown in **Image 9**.
4. Using (2) 1/4" or .25" screws, attach the SM100 bracket to the console as shown in **Image 10**. If needed, turn swivel mounts out of the way. The bracket will slide horizontally to improve the angle of camera as shown in **Image 10**.
5. For the next step, move the swivel outer frame to the top of five elongated holes on the SM100 bracket:
To do this, remove the thumbscrews holding outer swivel frame. Move the frame up to the top elongated hole and re-tighten the thumbscrews. Now you are ready to mount the board camera to the outer frame. Make sure the board camera you're mounting is upright. (You can tell this by making the sure the plug for the wire is at the bottom of the circuit board when the SAC is standing upright.)
6. Using (2) small brass screws and (2) nylon washers, screw the camera board to the outer swivel frame using the instructions below.
(Make sure to put the nylon washers between the camera circuit board and the swivel mount as shown in Image 11.)
Use only the holes described below as shown in Image 12.
The **SM100BW** board camera uses #2 mounting holes (Top Right Bottom Left).
The **SM100HDC** board camera uses #1 mounting holes (Top Left Bottom Right).
The **SM100HDCB** board camera uses #1 mounting holes (Top Left Bottom Right).
(By not installing the screws and washers correctly you will cause the camera to short out and not function. THIS WILL VOID THE WARRANTY!)
7. Tighten screws with small flat blade screw driver as shown in **Image 13**.
8. Now that the camera board is screwed to the frame you can move the outer frame back down towards the plexiglas lens by removing the thumb screws, remove the lens cap from the camera and slide the outer swivel downward to the elongated hole closest to the plexiglas making sure that it will not interfere with camera movement. If it does interfere, move it back up one hole until it is clear of the plexiglas.
9. Then adjust the angle of both swivels by loosening the screws as shown in **Image 14** and move inner swivel left/right and outer swivel up and down as shown in **Image 15**.
(Be careful not to push on the camera circuit board while adjusting angle of camera. This will cause the camera circuit board to crack! THIS WILL VOID THE WARRANTY! Push on the swivel frames only!)
10. Tighten the screws when you have the angle you want. Remember the mounting bracket will slide left and right as shown in **Image 10** to give you more of a horizontal angle for the camera.
11. Using the zip tie, attach the wire coming from the camera board to the SM100 bracket.
NOTE: Keep enough slack between the camera and the zip tie so you can still move the camera. This will prevent damage to the circuit board if the wire is pulled.
You are done with Installation of the SM100 into SAC
U.S. Patent #7,124,656

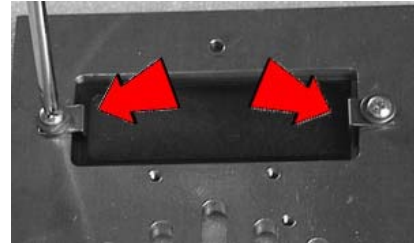


Image 9

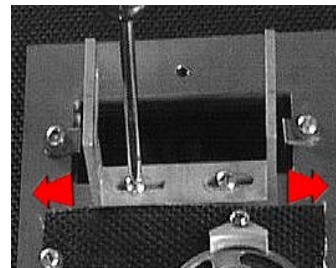


Image 10

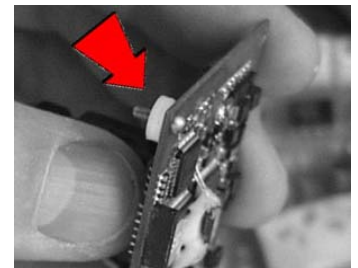


Image 11

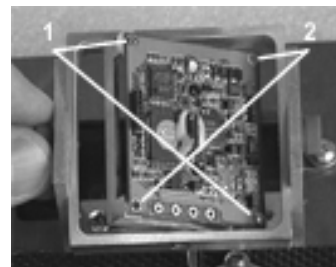


Image 12

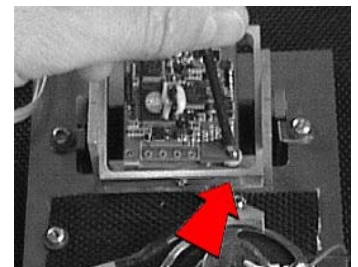


Image 13

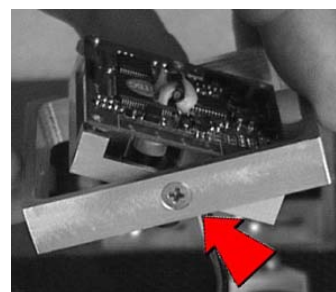


Image 14

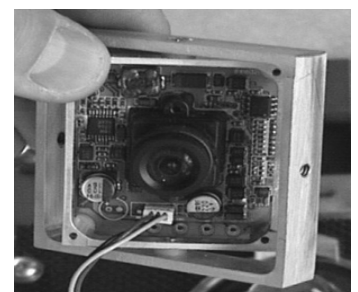


Image 15